



**Specification of: RGA 31-2528-6X-3G**

**Roof exhaust fans Gebhardt ergovent**

Fan in explosion protected execution acc. to EU regulations 94/9/EG(ATEX). Category 3G (IIG c IIA T3) suitable for media temperatures of - 20 °C up to + 40 °C. Stylish cowl made of metal. Base frame of galvanised sheet steel for fitting to upstand, projecting well beyond the upstand in order to increase weatherproofing. Flange connection at intake acc. to DIN 24155-2 Protection grid at discharge High performance centrifugal impeller with backward curved blades fitted to the rotor of an integrated motor. Motor maintenance free, vibration isolated, and fully protected by PTC thermistors Performance data in according DIN 24166 tolerance class 2 (BS 848 Class "B").

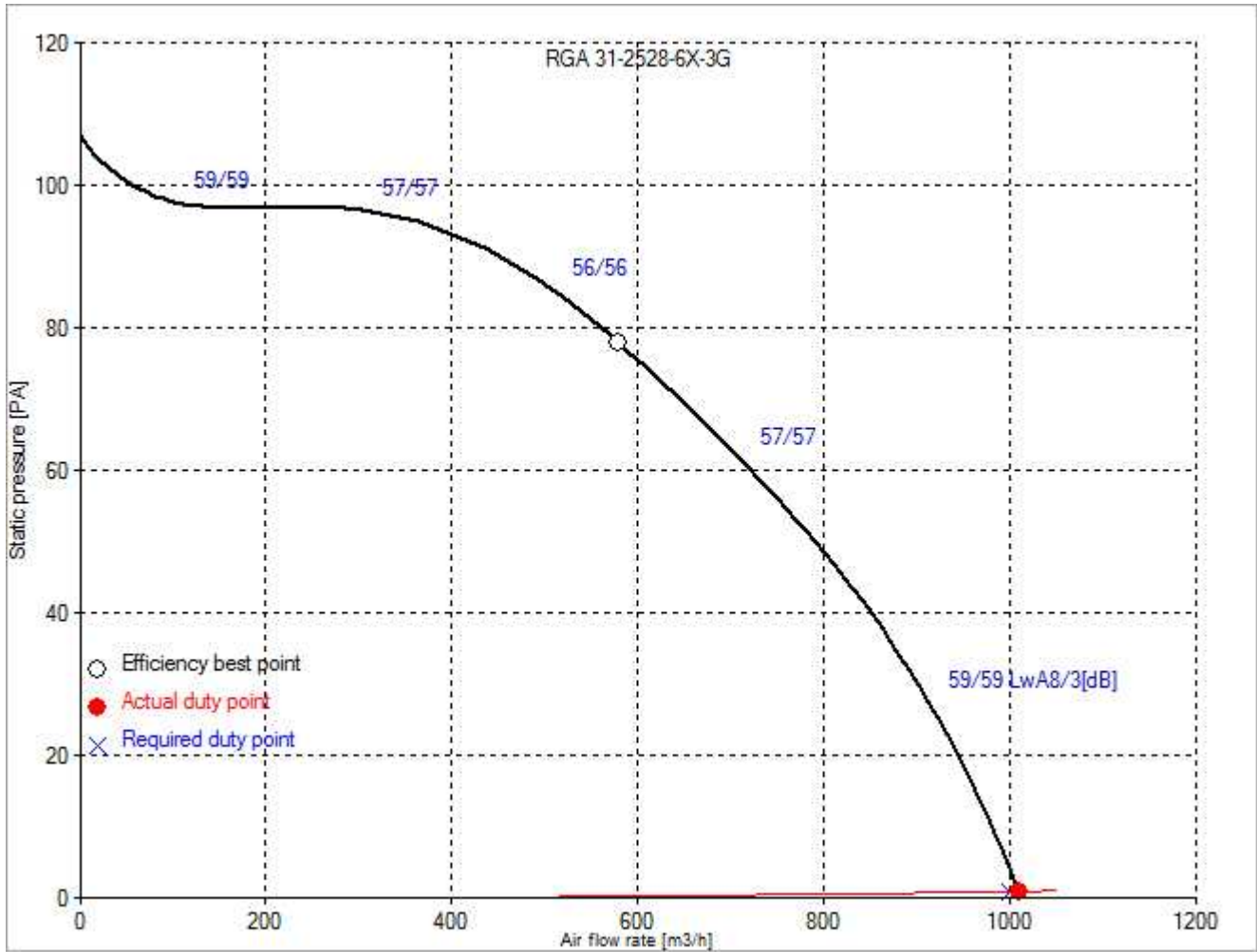
**Technical data of the fan acc. to ATEX: RGA 31-2528-6X-3G**

ErP-directive not applicable

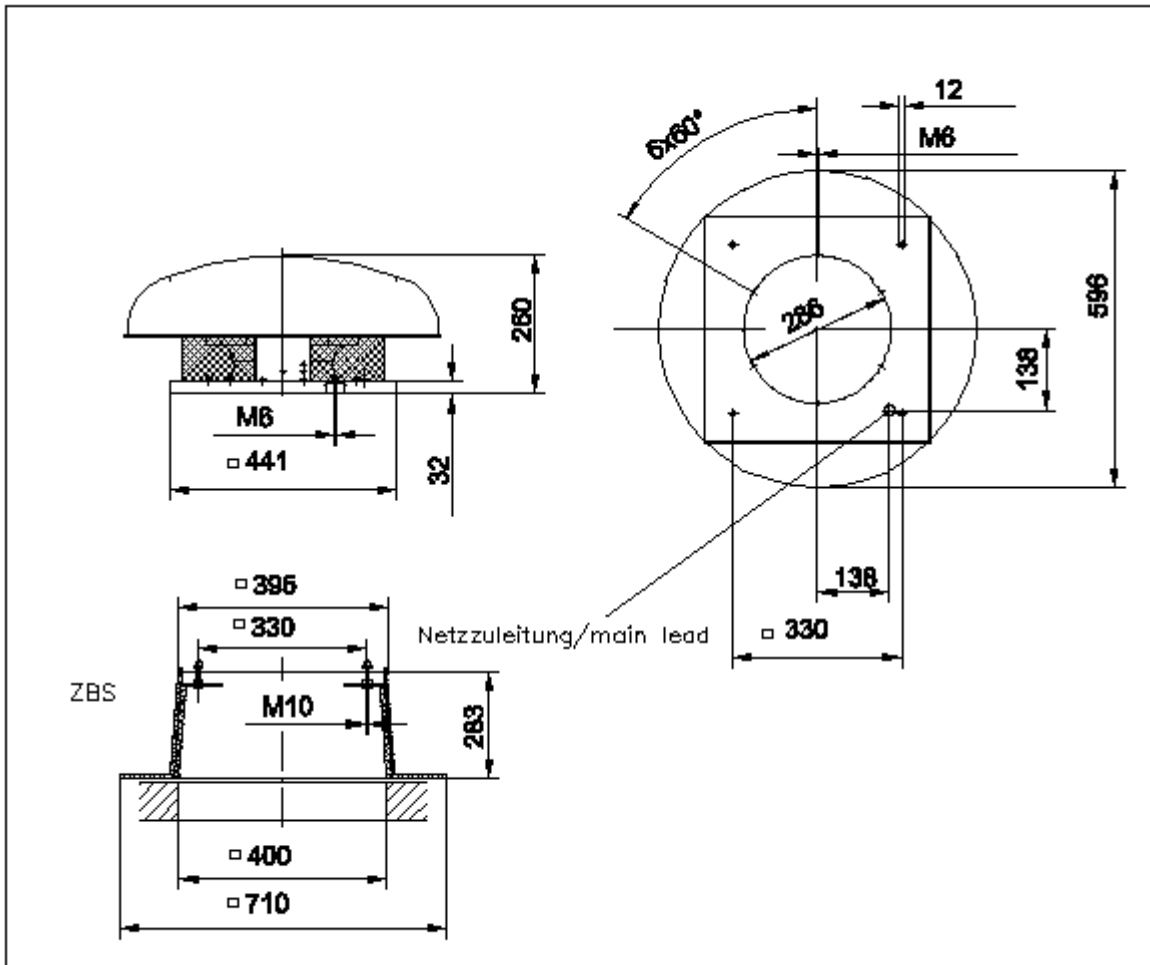
Description	Value Dimension
<b>Specified duty point</b>	
Air flow rate (V)	1001 m³/h
Static pressure rise (dp <sub>ra</sub> )	1 Pa
<b>Actual duty point</b>	
Installation acc. DIN 24163 Part 1	A
Reference density (Rho1)	1.15 kg/m³
Medium temperature (t)	20 C
Air flow rate (V)	1011 m³/h
Static pressure increase (dp <sub>ra</sub> )	1 Pa
fan speed (n <sub>v</sub> )	- min <sup>-1</sup>
Absorbed power (P <sub>1</sub> )	- kW
Current (I)	- A
Static system efficiency (ETA <sub>raS</sub> )	- %
Specific Fan Power (SFP-factor)	- W/(m³/s)
Nozzle calibration factor (K <sub>10</sub> )	- m²s/h
Differential pressure on nozzle (dp <sub>D</sub> )	- Pa
Velocity at discharge area (c)	- m/s
Fan weight	13 kg
A-weighted sound power level discharge/intake LwA <sub>B/3</sub>	61/61 dB
Unweighted octave sound power level	Octave mid frequencies <sup>1)</sup> 63/125/250/500/1k/2k/4k/8k Hz 52/60/59/57/56/54/48/38 dB discharge LwOkt <sub>8</sub> 64/73/59/56/53/51/44/32 dB intake LwOkt <sub>3</sub>
<b>Rated data</b>	
Phase-Voltage-Frequency	3~400 D-50 V-Hz
Number of poles:	6
Motor rating (P <sub>N</sub> )	- kW
Max. absorbed power (P <sub>1max</sub> )	0.14 kW
Rated motor speed (n <sub>N</sub> )	990 min <sup>-1</sup>
Rated motor current (I <sub>N</sub> )	0,89 A
Capacitor (C)	- µF
Temperature range of conveying medium (t <sub>min</sub> ... t <sub>max</sub> )	-20...40 C

<sup>1)</sup> The octave sound power levels can be higher at octave bands at or close to blade passing frequency.

Fan curve to RGA 31-2528-6X-3G



Dimensions to RGA 31-2528-6X-3G



Rotation: RD  
 Handing: 90